



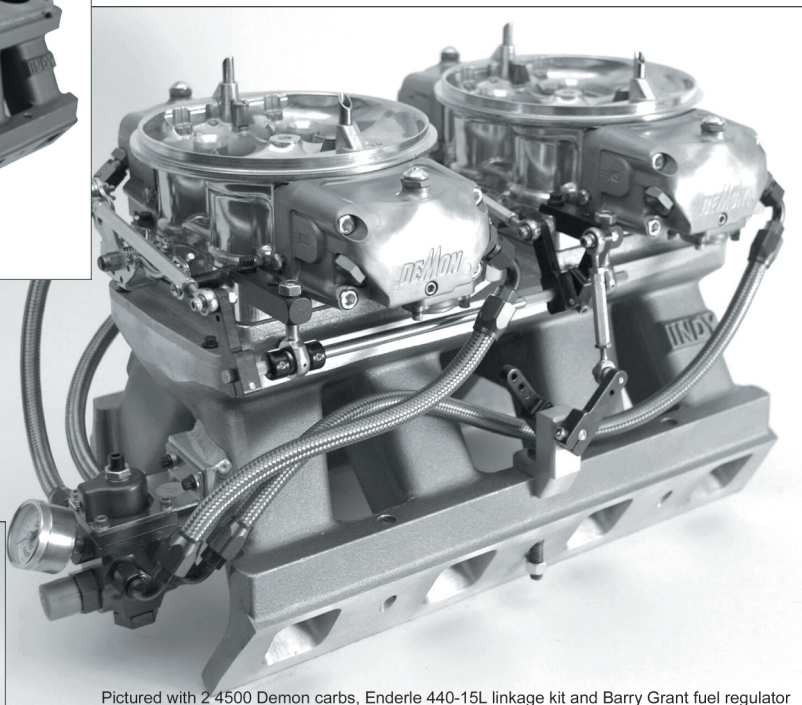
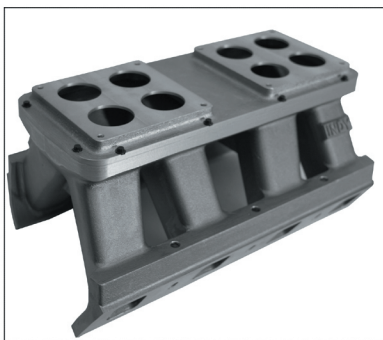
MANIFOLDS

LEGEND

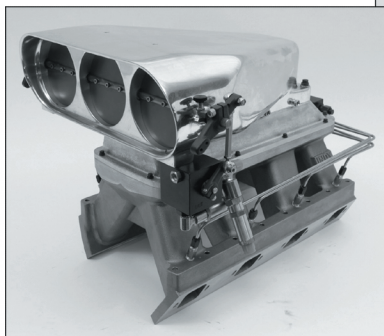
TUNNEL RAM, FUEL INJECTION, BLOWER AND CROSS RAM MANIFOLDS



With today's bigger cubic inch Indy Legend engines air flow to the intake valve is critical. Larger cross sectional areas of the manifold runner and head port are necessary. Correct placement of the intake runner to the bottom of the carburetor is perfect in the tunnel ram verses any other manifold. The sheet metal style (426-5) tunnel ram comes with your choice of 2 - 4150's, 2 - 4500's, or the new Enderle fuel injection with 2" riser. Larger ports, in many cases, require the 10 bolt mounting to the head, this eliminates the standard Chrysler Hemi 16 bolt mounting which was OK for small 426 intake ports, but too close together for the larger cross section head. The Indy tunnel ram will fit the original Chrysler 426 Hemi head with 16 bolt mounting. In most cases a 50 to 60 HP gain is realized with consistent spark plug readings. Breathe new life into your combination.



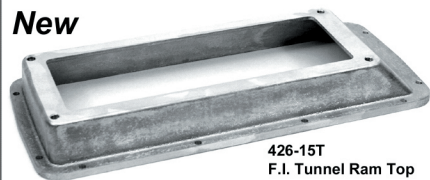
Pictured with 2 4500 Demon carbs, Enderle 440-15L linkage kit and Barry Grant fuel regulator



Part # 426-5 Legend Tunnel Ram

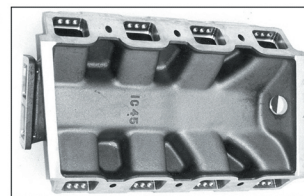
- Machined to fit original 426 Hemi, 16 or 10 bolt mounting pattern.
- Choice tops: 2- 4150's, 2-4500's, or NEW Enderle F.I. 2" riser
- Fuel injection bosses cast into manifold for simple E.F.I. conversions.
- 426-5 is 9.25" from end rails of block to top of carb flange of manifold.

New

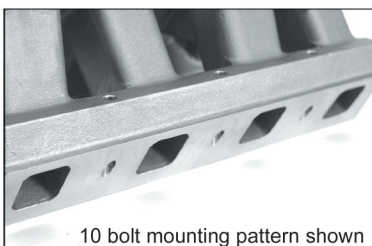


426-15T
F.I. Tunnel Ram Top

Continuing development is the key to staying on the cutting edge of technology in this industry. Take for example the new 426-15T tunnel ram top. It has an integrated 2 riser designed into the top to add plenum volume and height. Another Indy original. In striving for perfection, Indy has incorporated a unique line up of Legend manifolds available for you. One example of our commitment is evident in many different styles of manifolds.



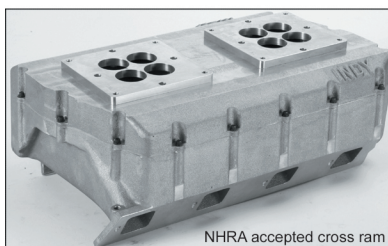
Bottom of 426-7 blower intake



10 bolt mounting pattern shown

Part # 426-5 10 Bolt Mounting Pattern

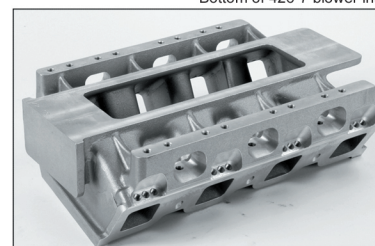
- Utilizes 10 bolt mounting pattern, compatible with all 10 bolt legend heads.
- All Legend intake manifolds have 10 bolt version available.
- This picture shows the ability to make the port openings of the manifold much larger to accommodate the large cross sectional heads that are available today.



NHRA accepted cross ram

Part # 426-8 with 2-4150 Inline

- Utilizes 10 or 16 bolt mounting pattern & 9 1/2" long straighted runners.
- Sold with one removable top, other tops purchased separately. Online 4500's, inline 4150's, or inline 3 2 barrel available).
- Best manifold available for NSS Racing.
- 426-8 measures 8.5" from end rails of block to top of carb flange of manifold.



Part # 426-7 Blower Intake

- Utilizes 10 bolt mounting pattern and large intake port opening.
- Machining for NHRA certified burst panels available.
- Machined for injector port nozzels.
- 426-7 measures 6.00" from end rails of block to top of carb flange of manifold.

Call: 317-862-3724 Fax: 317-862-6300 Web: indyheads.com Email: techline@indyheads.com

Hemi is a trademark of the Chrysler Corporation and is used for identification purposes only

Not legal for use or sale on pollution controlled vehicles